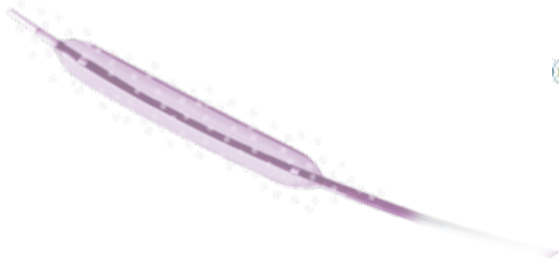


## The **POWER** of precision

- All angioplasties, even distal & heavily calcified lesions
- Before a DEB
- Stent Proximal Optimization Technique (POT)
- Post-dilatation

**SAFETY**

**ABP\* 27 ATM**



## Pre-dilatation before a DEB

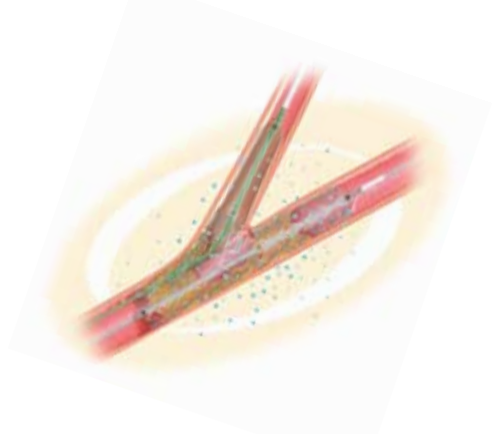
When using a Drug Eluting Balloon and to enhance absorption of the active substance into the vessel wall.



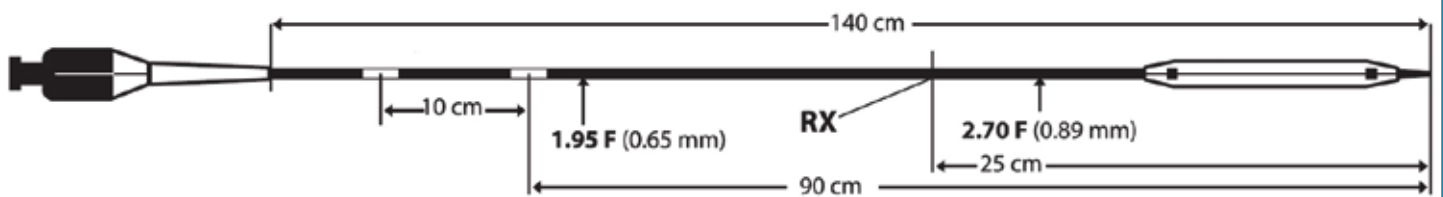
## Complex lesions: pre, post & POT dilatations

To optimize struts apposition for a better re-endothelization and an optimal absorption of the active substance with a Drug Eluting Stent.

The Perfect choice for your bifurcations.



### Design



### Ordering Information

Diameter (mm)	Length (mm)		
	10	15	20
2.00	PTCP0001	PTCP0007	PTCP0013
2.50	PTCP0002	PTCP0008	PTCP0014
3.00	PTCP0003	PTCP0009	PTCP0015
3.50	PTCP0004	PTCP0010	PTCP0016
4.00	PTCP0005	PTCP0011	PTCP0017

### Specifications

Guiding catheter compatibility	5F
Guidewire compatibility	0,014"
Nominal pressure	12 atm
Rated burst pressure	20 atm
Average burst pressure	27 atm

### Compliance Chart

Pressure (Atm)	Balloon Diameter (mm)					
	2.00	2.50	3.00	3.50	4.00	4.50
7	1.88	2.36	2.81	3.29	3.72	4.21
8	1.91	2.39	2.85	3.33	3.78	4.27
9	1.94	2.42	2.88	3.37	3.83	4.33
10	1.96	2.44	2.91	3.40	3.87	4.38
11	1.99	2.47	2.95	3.44	3.92	4.43
12	2.01	2.50	2.98	3.48	3.98	4.48
13	2.03	2.52	3.01	3.51	4.01	4.53
14	2.05	2.54	3.03	3.54	4.04	4.57
15	2.07	2.56	3.06	3.56	4.08	4.61
16	2.08	2.57	3.08	3.58	4.11	4.64
17	2.10	2.59	3.09	3.60	4.13	4.67
18	2.11	2.60	3.11	3.62	4.15	4.69
19	2.13	2.61	3.12	3.64	4.17	4.72
20	2.14	2.62	3.13	3.66	4.19	4.74
21	2.15	2.64	3.15	3.67	4.21	4.76

NP - Nominal Pressure

RBP - Rated Burst Pressure - DO NOT EXCEED

7 rue du Fossé Blanc  
92230 GENNEVILLIERS - FRANCE  
Tél : +33 (0)1 47 90 70 30  
Fax : +33 (0)1 47 91 05 85  
info@minvasys.com - www.minvasys.com